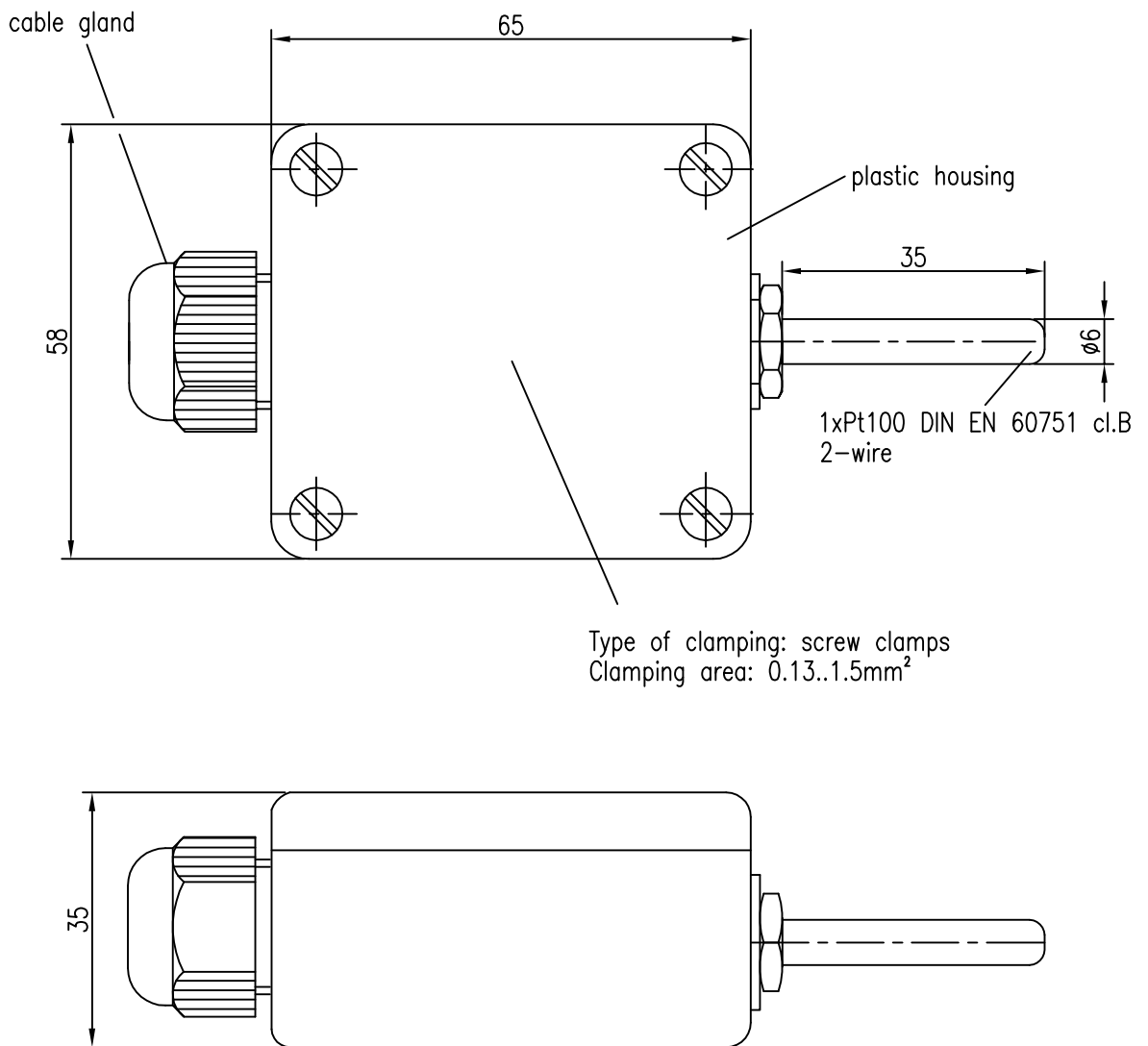



The copying, distribution and utilization of this documents as well as the communication of its contents to others without expressed authorization is prohibited.



IP65

Working temperature: -50°C to +90°C

		1	2	3	4	5	(tolerances)		Scale ---			
		6	7	8	9	10			(Material) <i>stainless steel</i>			
							Date	Author	<i>Article</i> ATF2 Pt100			
						26.09.23	V.lakovlev					
						Drawing number:						sheet
						W3C1I1-1587-5762						1
												1 sh.
Rev.	Revision record			Date	Auth.	OEM Automatic						