



## **SNK series**

# 1500 V DC PI-Spring terminal blocks for photovoltaic applications

Speed up wiring time of photovoltaic circuits and improve on site safety for installers and end users of the photovoltaic industry

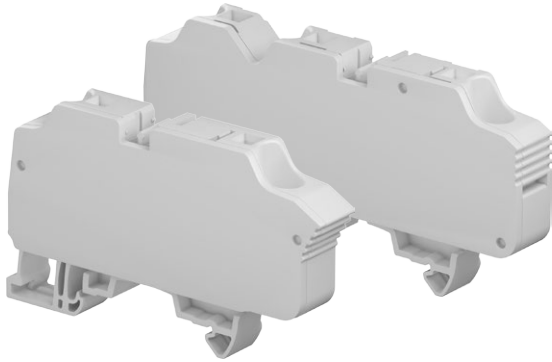


- 50% faster connection time
- Compact and convenient for PV DC applications
- Safe and reliable design in harsh environment



## SNK series, terminal blocks

### PI-Spring technology

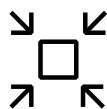


The new PI-Spring ZK-PV range brings flexible connection concept to 1500 V photovoltaic circuits, making wiring work faster and improving safety for installers and end users.



#### 50% faster connection time

- Quickly connect wires in "Push-In mode" without tooling for maximum time saving
- Connect comfortably in "Spring mode" by using a screwdriver for long series
- Pre-mounted end section which prevents users to do it on site
- Screwless plug and play jumpers available for ZK10...PV to interconnect blocks very quickly.



#### Compact and convenient for PV DC applications

- Compact design only 2 mm thicker than normal PI-Spring terminal blocks
- Available in grey and blue colors to differentiate (+) and (-) poles of the PV strings
- Easy combining: choose 3 connections for grouping 2 circuits or interconnect several ZK10...PV with JB12 jumpers for grouping over 3 circuits.



#### Safe and reliable design in harsh environment

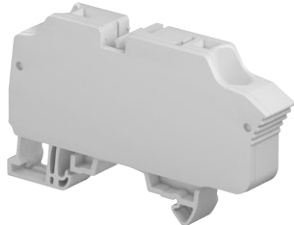


- Components and design optimized to guarantee a high level of safety for the users
- Long quality track record of ABB's PI-Spring products, successfully installed worldwide
- Resistant to harsh environments with high temperature variations, humidity, solar UV, high heat levels, vibration and shocks.

## ZK10-PV PI-Spring terminal blocks

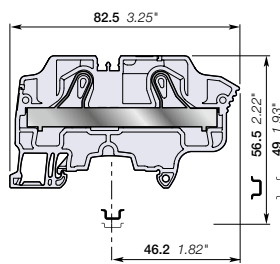
Feed-through - 12 mm 0.472 in spacing

10 mm<sup>2</sup>  
6 AWG



1SNK106124V0014

ZK10-PV



12 mm 0.472 in spacing

### Description

Specially designed for high voltage utility scale solar power plants:

- Rated voltage of 1500 V DC IEC and 1000 V DC UL,
- Pre-mounted end section with light grey color specific to this application,
- Improved design with ribs to increase creepage distance,
- Compact solution only 2 mm thicker than normal product,
- Compatible with JB12 jumpers to interconnect multiple terminal blocks.

Description	Color	Type	Order code	Pkg qty	Weight 1 pce g
Feed-through 2 connections	Grey	ZK10-PV	1SNK710063R0000	20	29.86
	Blue, grey	ZK10-PV-BL	1SNK710065R0000	20	29.86

### Main technical data

Connecting capacity		IEC	UL - CSA
1 conductor per clamp	Rigid - Solid / Stranded	0.5 ... 16 mm <sup>2</sup>	20 ... 6 AWG
	Flexible	0.5 ... 10 mm <sup>2</sup>	
	with non insulated ferrule	0.5 ... 10 mm <sup>2</sup>	20 ... 8 AWG
	with insulated ferrule	0.5 ... 10 mm <sup>2</sup>	20 ... 8 AWG
2 conductors per clamp	Flexible with twin ferrule	0.5 ... 4 AWG	20 ... 12 AWG
Rated current / Rated cross section		57 A / 10 mm <sup>2</sup>	55 A / 6 AWG
Rated short-time withstand current (1s)		1200 A	1596 A
Short Circuit Current Rating (with specific conditions)			100 kA
Rated voltage		1000 VAC / 1500 VDC	1000 V
Impulse withstand voltage		8000 V	
Protection		IP20	NEMA 1

### Mounting instructions

Rail		TH 35-7.5, TH 35-15
Wire stripping length		15 mm 0.591 in
Tool (for flexible conductor without ferrule)		Flat screwdriver Ø 4 mm Ø 0.157 in

The connecting capacity data for one Rigid - Solid / Stranded - Flexible conductor (when applicable) is a mandatory information required by IEC, UL and CSA standards (Copper conductors). All other data are provided as supplementary information only. For more details, please consult our CB, UL or CSA certificates and technical datasheet available on <http://www.ABB.com>



### Accessories

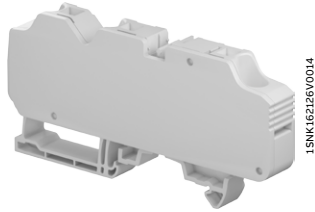
Description	Color	Type	Order code	Pkg qty	Weight 1 pce g
1 End stops	Dark grey	BAZ1	1SNK900002R0000	50	5.30
2 Jumper bars	Orange	JB12-2	1SNK912302R0000	50	4.90
		JB12-3	1SNK912303R0000	50	7.60
		JB12-5	1SNK912305R0000	20	12.90
3 Circuit separators	Dark grey	CS-R3	1SNK900107R0000	20	6.40
4 Test adapters	Dark grey	TP2	1SNK900203R0000	20	1.70
		TP4	1SNK900205R0000	20	2.40
5 Terminal block markers	White	MC812	1SNK160000R0000	22	10.00
		MC812PA	1SNK169999R0000	20	14.00
		MG-CPM 13 41791	1SNB041791R0612	1680	0.273
	Grey	UMH	1SNK900611R0000	10	0.20

Complete list of accessories is indicated in the terminal block datasheet including end stops. Some accessories such as jumper bars may modify the terminal block's ratings: Complete information available in the accessories section of the catalog.

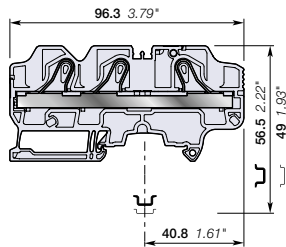
## ZK10-3P-PV PI-Spring terminal blocks

Feed-through with 3 connections - 12 mm 0.472 in spacing

10 mm<sup>2</sup>  
6 AWG



ZK10-3P-PV



12 mm 0.472 in spacing

### Description

Specially designed for high voltage utility scale solar power plants:

- Rated voltage of 1500 V DC IEC and 1000 V DC UL,
- Pre-mounted end section with light grey color specific to this application,
- Improved design with ribs to increase creepage distance,
- Compact solution only 2 mm thicker than normal product,
- 3 connections configuration for easy grouping: 2 inputs / 1 output or 1 input / 2 outputs,
- Compatible with JB12 jumpers to interconnect multiple terminal blocks.

Description	Color	Type	Order code	Pkg qty	Weight 1 pce g
Feed-through 3 connections	Grey	ZK10-3P-PV	1SNK710064R0000	20	38.61
	Blue, grey	ZK10-3P-PV-BL	1SNK710067R0000	20	38.61

### Main technical data

Connecting capacity		IEC	UL - CSA
1 conductor per clamp	Rigid - Solid / Stranded	0.5 ... 16 mm <sup>2</sup>	20 ... 6 AWG
	Flexible	0.5 ... 10 mm <sup>2</sup>	
	with non insulated ferrule	0.5 ... 10 mm <sup>2</sup>	20 ... 8 AWG
	with insulated ferrule	0.5 ... 10 mm <sup>2</sup>	20 ... 8 AWG
2 conductors per clamp	Flexible with twin ferrule	0.5 ... 4 AWG	20 ... 12 AWG
Rated current / Rated cross section		57 A / 10 mm <sup>2</sup>	56 A / 6 AWG
Rated short-time withstand current (1s)		1200 A	1596 A
Short Circuit Current Rating (with specific conditions)			100 kA
Rated voltage		1000 VAC / 1500 VDC	1000 V
Impulse withstand voltage		8000 V	
Protection		IP20	NEMA 1

### Mounting instructions

Rail		TH 35-7.5, TH 35-15
Wire stripping length		15 mm 0.591 in
Tool (for flexible conductor without ferrule)		Flat screwdriver Ø 4 mm Ø 0.157 in

The connecting capacity data for one Rigid - Solid / Stranded - Flexible conductor (when applicable) is a mandatory information required by IEC, UL and CSA standards (Copper conductors). All other data are provided as supplementary information only. For more details, please consult our CB, UL or CSA certificates and technical datasheet available on <http://www.ABB.com>



### Accessories

Description	Color	Type	Order code	Pkg qty	Weight 1 pce g
1 End stops	Dark grey	BAZ1	1SNK900002R0000	50	5.30
2 Jumper bars	Orange	JB12-2	1SNK912302R0000	50	4.90
		JB12-3	1SNK912303R0000	50	7.60
		JB12-5	1SNK912305R0000	20	12.90
3 Circuit separators	Dark grey	CS-R3	1SNK900107R0000	20	6.40
4 Test adapters	Dark grey	TP2	1SNK900203R0000	20	1.70
		TP4	1SNK900205R0000	20	2.40
5 Terminal block markers	White	MC812	1SNK160000R0000	22	10.00
		MC812PA	1SNK169999R0000	20	14.00
	Grey	MG-CPM 13 41791	1SNB041791R0612	1680	0.273
		UMH	1SNK900611R0000	10	0.20

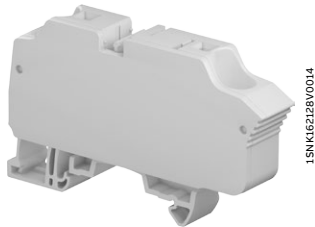
Complete list of accessories is indicated in the terminal block datasheet including end stops. Some accessories such as jumper bars may modify the terminal block's ratings: Complete information available in the accessories section of the catalog.



## ZK16-PV PI-Spring terminal blocks

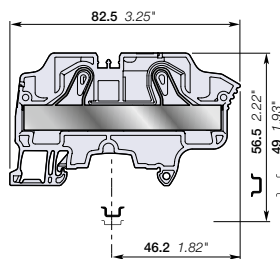
Feed-through - 14 mm 0.551 in spacing

16 mm<sup>2</sup>  
4 AWG



1SNK16228V0014

ZK16-PV



14 mm 0.551 in spacing

### Description

Specially designed for high voltage utility scale solar power plants:

- Rated voltage of 1500 V DC IEC and 1000 V DC UL,
- Pre-mounted end section with light grey color specific to this application,
- Improved design with ribs to increase creepage distance,
- Compact solution only 2 mm thicker than normal product,
- No available jumpers for ZK16-PV and ZK16-3P-PV (14 mm spacing).

Description	Color	Type	Order code	Pkg qty	Weight 1 pce g
Feed-through 2 connections	Grey	<input type="checkbox"/> ZK16-PV	1SNK712063R0000	15	36.56
	Blue, grey	<input type="checkbox"/> ZK16-PV-BL	1SNK712065R0000	15	36.56

### Main technical data

Connecting capacity		IEC	UL - CSA
1 conductor per clamp	Rigid - Solid / Stranded	0.5 ... 25 mm <sup>2</sup>	20 ... 4 AWG
	Flexible	0.5 ... 16 mm <sup>2</sup>	20 ... 6 AWG
	with non insulated ferrule	0.5 ... 16 mm <sup>2</sup>	20 ... 6 AWG
	with insulated ferrule	0.5 ... 16 mm <sup>2</sup>	20 ... 6 AWG
2 conductors per clamp	Flexible with twin ferrule	0.5 ... 6 AWG	20 ... 10 AWG
Rated current / Rated cross section		76 A / 16 mm <sup>2</sup>	75 A / 4 AWG
Rated short-time withstand current (1s)		1920 A	2544 A
Short Circuit Current Rating (with specific conditions)			100 kA
Rated voltage		1000 V AC / 1500 V DC	1000 V
Impulse withstand voltage		8000 V	
Protection		IP20	NEMA 1

### Mounting instructions

Rail		TH 35-7.5, TH 35-15
Wire stripping length		15 mm 0.591 in
Tool (for flexible conductor without ferrule)		Flat screwdriver Ø 4 mm Ø 0.157 in

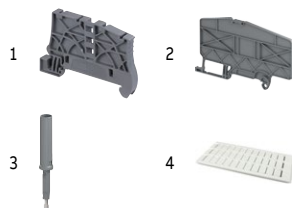
The connecting capacity data for one Rigid - Solid / Stranded - Flexible conductor (when applicable) is a mandatory information required by IEC, UL and CSA standards (Copper conductors). All other data are provided as supplementary information only. For more details, please consult our CB, UL or CSA certificates and technical datasheet available on <http://www.ABB.com>



### Accessories

Description	Color	Type	Order code	Pkg qty	Weight 1 pce g
1 End stops	5.2 mm 0.205 in	Dark grey	BAZ1	1SNK900002R0000	50 5.30
2 Circuit separators	3 mm 0.118 in	Dark grey	CS-R3	1SNK900107R0000	20 6.40
3 Test adapters	For test plugs DIA 2 mm 0.079 in	Dark grey	TP2	1SNK900203R0000	20 1.70
	For test plugs DIA 4 mm 0.157 in		TP4	1SNK900205R0000	20 2.40
4 Terminal block markers	Blank card	White	MC812	1SNK160000R0000	22 10.00
			MC812PA	1SNK169999R0000	20 14.00
	Blank marker		MG-CPM 13 41791	1SNB041791R0612	1680 0.273
	Universal wire markers holder	Grey	UMH	1SNK900611R0000	10 0.20

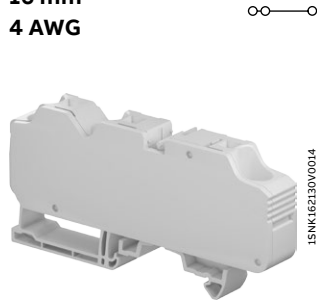
Complete list of accessories is indicated in the terminal block datasheet including end stops. Some accessories such as jumper bars may modify the terminal block's ratings: Complete information available in the accessories section of the catalog.



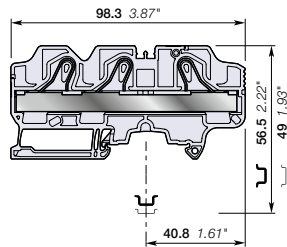
## ZK16-3P-PV PI-Spring terminal blocks

Feed-through with 3 connections - 14 mm 0.551 in spacing

16 mm<sup>2</sup>  
4 AWG



ZK16-3P-PV



14 mm 0.551 in spacing

### Description

Specially designed for high voltage utility scale solar power plants:

- Rated voltage of 1500 V DC IEC and 1000 V DC UL,
- Pre-mounted end section with light grey color specific to this application,
- Improved design with ribs to increase creepage distance,
- Compact solution only 2 mm thicker than normal product,
- 3 connections configuration for easy grouping: 2 inputs / 1 output or 1 input / 2 outputs,
- No available jumpers for ZK16-PV and ZK16-3P-PV (14 mm spacing).

Description	Color	Type	Order code	Pkg qty	Weight 1 pce g
Feed-through 3 connections	Grey	ZK16-3P-PV	1SNK712064R0000	15	48.01
	Blue, grey	ZK16-3P-PV-BL	1SNK712067R0000	15	48.01

### Main technical data

Connecting capacity		IEC	UL - CSA
1 conductor per clamp	Rigid - Solid / Stranded	0.5 ... 25 mm <sup>2</sup>	20 ... 4 AWG
	Flexible	0.5 ... 16 mm <sup>2</sup>	
	with non insulated ferrule	0.5 ... 16 mm <sup>2</sup>	20 ... 6 AWG
	with insulated ferrule	0.5 ... 16 mm <sup>2</sup>	20 ... 6 AWG
2 conductors per clamp	Flexible with twin ferrule	0.5 ... 6 AWG	20 ... 10 AWG
Rated current / Rated cross section		76 A / 16 mm <sup>2</sup>	75 A / 4 AWG
Rated short-time withstand current (1s)		1920 A	2544 A
Short Circuit Current Rating (with specific conditions)			100 kA
Rated voltage		1000 VAC / 1500 VDC	1000 V
Impulse withstand voltage		8000 V	
Protection		IP20	NEMA 1

### Mounting instructions

Rail		TH 35-7.5, TH 35-15
Wire stripping length		15 mm 0.591 in
Tool (for flexible conductor without ferrule)		Flat screwdriver Ø 4 mm Ø 0.157 in

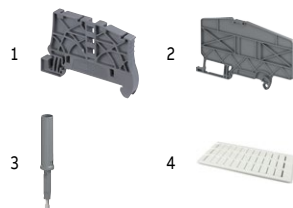
The connecting capacity data for one Rigid - Solid / Stranded - Flexible conductor (when applicable) is a mandatory information required by IEC, UL and CSA standards (Copper conductors). All other data are provided as supplementary information only. For more details, please consult our CB, UL or CSA certificates and technical datasheet available on <http://www.ABB.com>



### Accessories

Description	Color	Type	Order code	Pkg qty	Weight 1 pce g
1 End stops	Dark grey	BAZ1	1SNK900002R0000	50	5.30
2 Circuit separators	Dark grey	CS-R3	1SNK900107R0000	20	6.40
3 Test adapters	Dark grey	TP2	1SNK900203R0000	20	1.70
		TP4	1SNK900205R0000	20	2.40
4 Terminal block markers	White	MC812	1SNK160000R0000	22	10.00
		MC812PA	1SNK169999R0000	20	14.00
	Grey	MG-CPM 13 41791	1SNB041791R0612	1680	0.273
		UMH	1SNK900611R0000	10	0.20

Complete list of accessories is indicated in the terminal block datasheet including end stops. Some accessories such as jumper bars may modify the terminal block's ratings: Complete information available in the accessories section of the catalog.



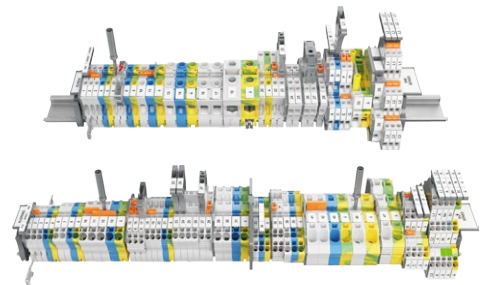
Discover our complete range of products dedicated to solar applications from SNK series PI-Spring, screw clamp and power terminal blocks to DBL distribution blocks as well as MC4-EVO2 PV connectors.



Link to product catalogue

#### SNK series - Terminal blocks

- 2 technologies available with common accessories and suitable for AC power applications and DC photovoltaic systems
- Screwless PI-Spring technology that combines 2 connection modes: direct push-in mode for 50% time saving and screw-driver connection mode for improved comfort
- Screw clamp technology to connect 2 wires in 1 clamp
- Rated voltage up to 1500 V DC (IEC) / 1000 V DC (UL).



Link to product catalogue

#### DBL range - Distribution blocks

- Grouping of several inputs into one output for DC applications, or single and multipole splitting for AC power applications
- Reversible cover that facilitates identification and wiring tasks
- Modular and touch proof design that eliminates bus bars, isolators, fasteners or protection screens
- Saving up to 50% rail space
- Rated voltage up to 1500 V DC (IEC) / 1000 V DC (UL).



Link to product catalogue

#### MC4-Evo2 PV connectors

- Ensure connections of the DC circuits on commercial, industrial and residential rooftop PV installations: from the PV modules to the combiner boxes (in series or in parallel) and from the combiner boxes to the string inverter
- Products made by Multi-Contact and therefore fully compatible and equivalent to all MC4 family products
- Rated voltage up to 1500 V DC (IEC) / 1500 V DC (UL).







---

**ABB France**

**Electrification Products Division**

**Low Voltage Products and Systems**

3, rue Jean Perrin

F-69687 Chassieu cedex / France

**You can find the address of your local sales organization  
on the ABB home page**



<http://new.abb.com/low-voltage>



<http://new.abb.com/low-voltage/products/connection-devices>



We reserve the right to make technical changes or modify the contents of this document without prior notice.

ABB does not accept any responsibility whatsoever for potential errors or possible lack of information in this document.

We reserve all rights in this document and in the subject matter and illustrations contained therein. Any reproduction, disclosure to third parties or utilization of its contents – in whole or in parts – is forbidden without prior written consent of ABB.

Copyright© 2018 ABB - All rights reserved